



Australian National Fabrication Facility

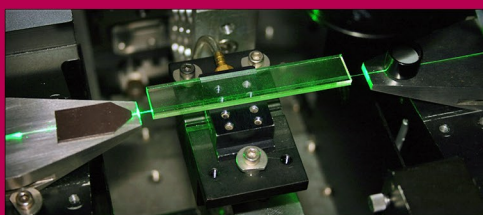
Providing micro and nano fabrication facilities for Australia's researchers

ANFF Sample Preparation & Characterisation Facilities - Macquarie University

WWW.ANFF.ORG.AU

OPTOFAB NODE

WWW.OPTOFAB.ORG.AU



FLAGSHIP EQUIPMENT

- ✦ Benchtop SEM (Hitachi) with an Energy Dispersion System
- ✦ JEOL cross-sectional polisher
- ✦ Advanced Differential Interference Contrast (DIC) Olympus microscopes
- ✦ 6-axis nano-precision Melles Griot alignment flexure stages
- ✦ C+L-band JDSU swept wavelength system (SWS)
- ✦ UV optical curing stations
- ✦ Various light sources, pump lasers, optical detectors and power meters
- ✦ Logitech optical polishing and lapping machines
- ✦ MTI Diamond wire cutter
- ✦ MTI Diamond wafer dicer
- ✦ Diamond face grinder
- ✦ Diamond coring drill
- ✦ High temperature ovens

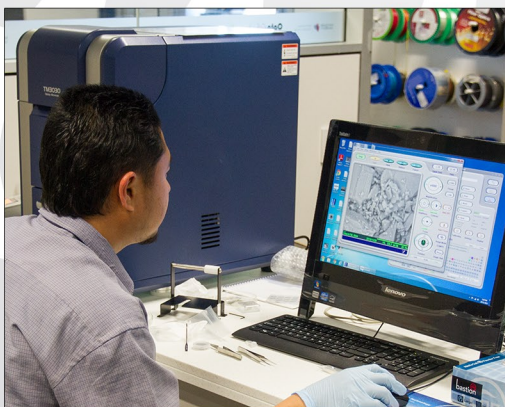
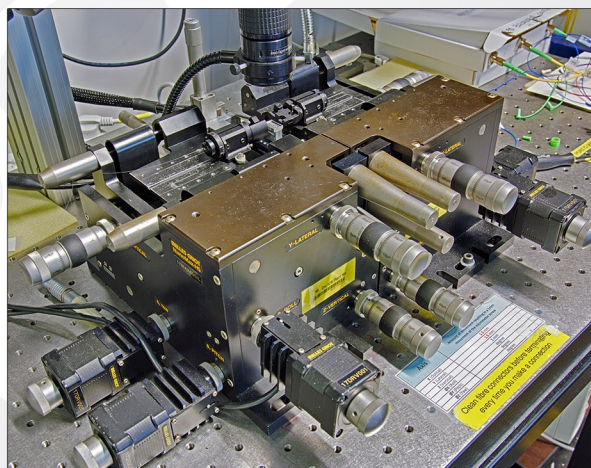
KEY CAPABILITIES

- ✦ Optical characterisation and device packaging
- ✦ Mechanical processing of glass and crystalline materials

The Sample Preparation and Characterisation Facilities at Macquarie University consists of a suite of equipment which allow users to mechanically process glass and crystalline materials whilst also providing the necessary tools for optical characterisation and device packaging.

Equipment can be accessed on an hourly basis or six month subscription basis depending on customer requirements. The facility can be used for:

- ✦ Refractive index visualisation
- ✦ Surface topology information
- ✦ Basic compositional analysis
- ✦ Device loss measurements
- ✦ Mode field evaluation
- ✦ Device pigtail packaging
- ✦ Optical polishing & grinding



An Australian Government Initiative
National Collaborative Research
Infrastructure Strategy



Trade & Investment

Contact

ANFF OptoFab Node
The Australian Hearing Hub
Macquarie University
16 University Ave
North Ryde, NSW 2109
Australia

www.optofab.org.au

Prof. Michael Withford
OptoFab Node Director
T: +61 2 9850 7056
E: michael.withford@mq.edu.au

Dr. Benjamin Johnston
OptoFab Facility Manager
T: +61 2 9850 8960
E: benjamin.johnston@mq.edu.au

