

## OptoFab Node

[WWW.ANFF.ORG.AU](http://WWW.ANFF.ORG.AU)

[WWW.OPTOFAB.ORG.AU](http://WWW.OPTOFAB.ORG.AU)



OptoFab forms one of the eight nodes of the Australian National Fabrication Facility (ANFF). Through world class facilities and highly skilled staff, the OptoFab node supports Australian research and industry in developing innovations, products and research for a stronger Australian future. The node comprises of teams at Macquarie University (HQ), The University of Adelaide, The University of Sydney and Bandwidth Foundry International to provide a broad range of photonic micro and nano fabrication, characterisation and functionalisation.

### KEY CAPABILITIES

- Laser machining, cutting & marking
- Laser written waveguide devices inside bulk materials
- Fibre Bragg Gratings
- Polycrystalline diamond film & diamond microparticles
- 3D metal & ceramic printing
- Customised glass production
- Production of soft & silica fibres
- Fibre functionalisation & sensor development
- Ultrasonic & HSC milling of soft & hard materials (5-Axis)
- Microstructured polymer optical fibre
- Photolithography: photomask & wafer production
- Ball-milled nanoparticles
- Mechanical processing of glass & crystalline materials
- Optical characterisation & device packaging

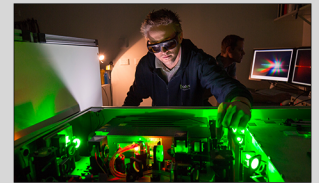
#### LASER MICROMACHINING & PROCESSING



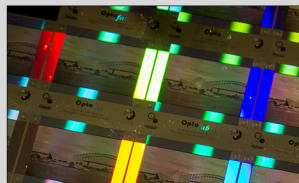
#### SPECIALITY & FUNCTIONAL OPTICAL MATERIALS



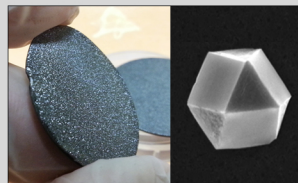
#### LASER INSCRIPTION OF PHOTONIC DEVICES



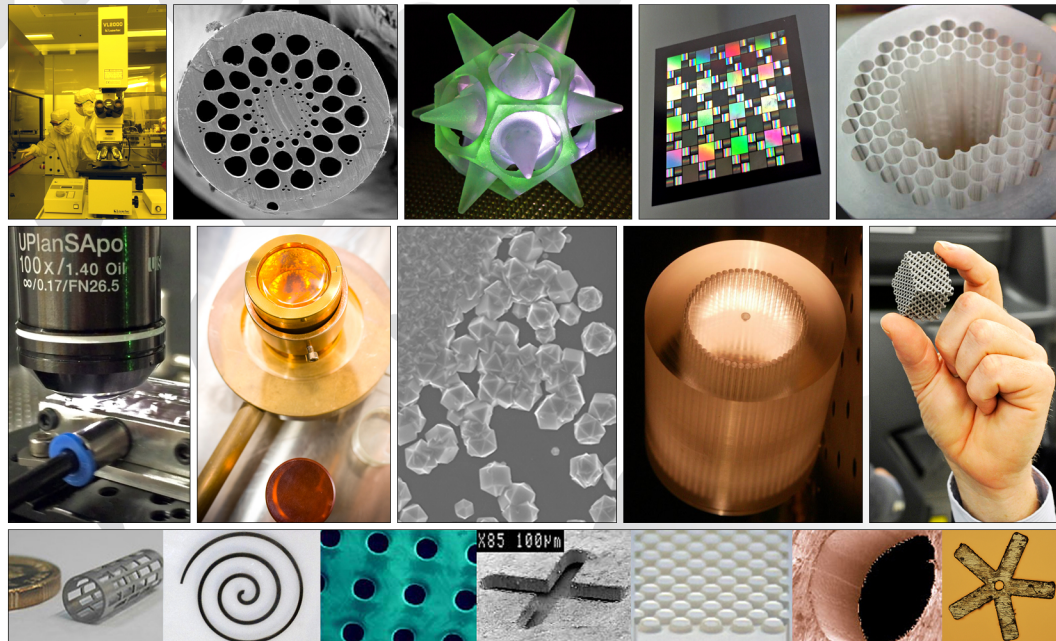
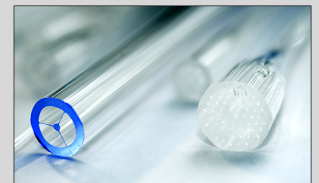
#### PHOTOLITHOGRAPHY



#### DIAMOND CVD & NANOPARTICLES



#### SPECIALITY OPTICAL FIBRE PRODUCTION



**MACQUARIE**  
University  
SYDNEY-AUSTRALIA



**THE UNIVERSITY**  
of **ADELAIDE**



**THE UNIVERSITY**  
of **SYDNEY**



**BANDWIDTH**  
**FOUNDRY**

### Contact

ANFF OptoFab Node

[www.optofab.org.au](http://www.optofab.org.au)



Prof. Michael Withford  
OptoFab Node Director  
T: +61 2 9850 7056  
E: [michael.withford@mq.edu.au](mailto:michael.withford@mq.edu.au)

